



# WAVES ELECTRONICS

Quality power  
to the point



## Our Products

- BATTERY CHARGERS
- NAVIGATIONAL LIGHT CONTROL PANEL
- MAIN SWITCH BOARD
- EMERGENCY SWITCH BOARD
- SHORE CONNECTION BOX
- CONSOLES
- EMI-EMC ENCLOSURES
- JUNCTION BOX
- DISTRIBUTION BOARD
- STARTERS/MOTOR CONTROL CENTER
- SOFT STARTER PANELS
- VARIABLE FREQUENCY DRIVE PANELS
- AUTOMATIC POWER FACTOR CORRECTION PANEL

AND MORE ...



Approved by



Authorized system integrators of



Unit assisted by



Approved SABRe supplier to:



Rolls-Royce

# Chronicles

<b>1972</b>	<b>1972</b>	<b>1994</b>	<b>2001</b>	<b>2003</b>	<b>2008</b>	<b>2017</b>	<b>2022</b>
<p>Waves Electronics founded</p>	<p>Commenced supply of panels and equipment to Cochin Shipyard</p>	<p>Started Exporting</p>	<p>Registered with INDIAN Navy for supply of Main Switch Board, Battery Charger, Control Panels (17 Products)</p>	<p>Established a new division for exports at Cochin Special Economic Zone</p>	<p>ISO 9001 certification</p>	<p>Appointed as supplier to Rolls Royce Naval</p>	<p>Honored from Ministry of MSME &amp;CSL for the significant contribution to INS Vikrant</p>

# Battery Chargers



- Single and Dual Charger Designs
- SCR, IGBT, and Variac type Chargers.
- Suitable for Nickel-Cadmium and Lead-acid Batteries.
- Appropriate for both Marine and Land Applications.

# Navigation Light Control Panels

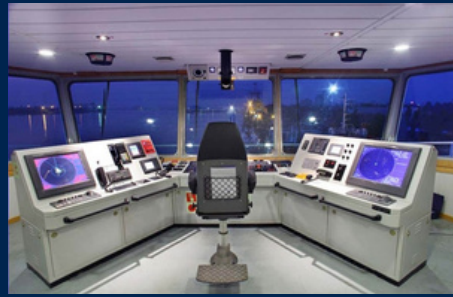


- PLC / Relay based design
- Remote monitoring of navigation light via HMI
- Special function using Keyer units are available
- Minimum human intervention
- Low maintenance
- Auto changeover
- Current Monitoring System with CMC card

# Consoles



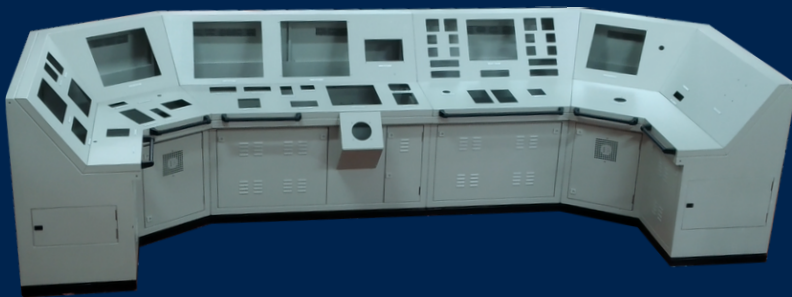
Wheelhouse AFT Console for Anchor Handling Tug Supply Vessel



Wheelhouse AFT Console for Anchor Handling Tug Supply Vessel



Engine Control Room Console for Anchor Handling Tug Supply Vessel



Bridge Console for Vietnam Border Guard

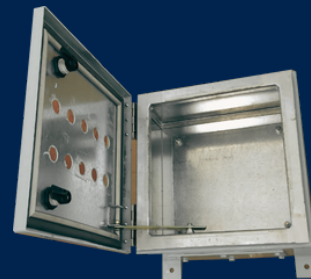


Wheelhouse Console for Coast Guard Fast Patrol Boat

# EMC-EMI Enclosures



Sewage Treatment Plant Control Panel with EMC-EMI Enclosure for Survey Vessel Large Project



EMC-EMI Enclosure

# Starter Panels



Starter for ACEL, Norway



## Shore Connection Box



SCB 125A for KMRL



SCB 1000A for Hindustan Shipyard



SCB 1600A for Maritronics

## Main Switch Boards



MSB for Anchor Handling Tug Supply Vessel  
 Certified by ABS



MSB (4000 A, 50kA) Certified by ABS for the biggest barge built  
 by Cochin Shipyard for NPCC, Abu Dhabi.

## Distribution Boards



Distribution Boards for ASKO Project, Unmanned Vessel, Norway



Emergency Stop Switch



Remote Start/Stop  
 Push Button Station



Polycarbonate Junction Box  
 with RJ45 Connector

for ASKO Project



# Intelligent Motor Control Centre



Intelligent Motor Control Centre for Diamond Cement Plant in West Africa

# Variable Frequency Drive Panels



VFD Panel (355kw) for Philips Carbon Black



VFD Panel (700kw)



Auxiliary & Standalone VFD Panels (2.2kw to 200kw) for ITC , Kovai

## EXPEDITION WITH OUR PANEL



INS Vikrant, designed and built by CSL for Indian Navy



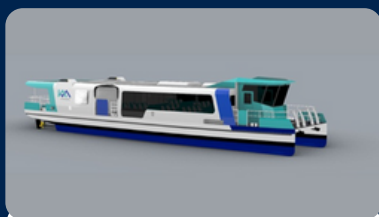
Largest barge designed & built by CSL for NPCC Abudabi



CIAL Vembanad Designed & Built by Samudra Shipyard



Floating Border Out Post Vessel Designed & Built by CSL for BSE



Electric Ferrie Designed & Built by CSL for Kochi Metro



Trailing Suction Hopper Dredger Designed & Built by CSL for DCI



SCI Pawan Anchor Handling Tug Supply Vessel Designed by STX OSC Norway



Inspection Barge for Indian Navy Built by Valeth Boats

## OUR PRODUCTS ARE TESTED & CERTIFIED BY

- ✓ ABS (American Bureau of Shipping)
- ✓ CPRI (Central Power Research Institute)
- ✓ IRS (Indian Register of Shipping)
- ✓ CQAE (Chief Quality Assurance Establishment (Warship Equipment )
- ✓ BV (Bureau of Veritas)
- ✓ ERDA (Electrical Research And Development Association)
- ✓ LRS (Lloyds Register of Shipping)
- ✓ ERTL (Electronics Regional Test Laboratory, Trivandrum )
- ✓ DNV (Det Norske Veritas)
- ✓ SAMEER (Society for Applied Microwave Electronics Engineering & Research)
- ✓ DQAN Directorate of Quality Assurance (Indian Navy)

## AWARDS AND HONOURS



Award presented to Waves Electronics by Union Minister for MSME Bhanu Pratap Singh Varma & CSL for the significant contribution to building INS Vikrant



**Waves Electronics Pvt.Ltd**  
**Kizhakkambalam-683562**  
**Ernakulam, Kerala, India**



**+91 9895901052**  
**+91 9747000508**



**waves72@gmail.com**  
**info@waveselectronics.com**



**www.waveselectronics.com**