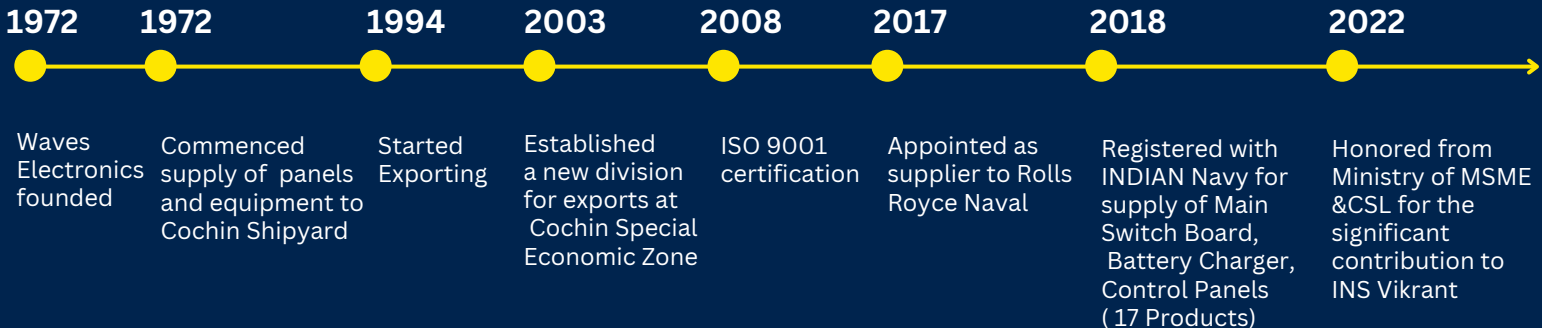




WAVES ELECTRONICS

Quality power to the point

Chronicles



Our Products

- BATTERY CHARGERS
- NAVIGATIONAL LIGHT CONTROL PANEL
- MAIN SWITCH BOARD
- EMERGENCY SWITCH BOARD
- SHORE CONNECTION BOX
- CONSOLES
- EMI-EMC ENCLOSURES
- JUNCTION BOX
- DISTRIBUTION BOARD
- STARTERS/MOTOR CONTROL CENTER
- SOFT STARTER PANELS
- VARIABLE FREQUENCY DRIVE PANELS
- AUTOMATIC POWER FACTOR CORRECTION PANEL

AND MORE ...



Battery Chargers



- Single and Dual Charger Designs
- SCR, IGBT, and Variac type Chargers.
- Suitable for Nickel-Cadmium and Lead-acid Batteries.
- Appropriate for both Marine and Land Applications.

Navigation Light Control Panels



- PLC / Relay based design
- Remote monitoring of navigation light via HMI
- Special function using Keyer units are available
- Minimum human intervention
- Low maintenance
- Auto changeover
- Current Monitoring System with CMC card

Shore Connection Box



SCB 125A for KMRL



SCB 1000A for Hindustan Shipyard



SCB 1600A for Maritronics

Consoles



Wheel house AFT Console for Anchor Handling Tug Supply Vessel



Wheel house AFT Console for Anchor Handling Tug Supply Vessel



Engine Control Room Console for Anchor Handling Tug Supply Vessel



Bridge Console Vietnam Border Guard

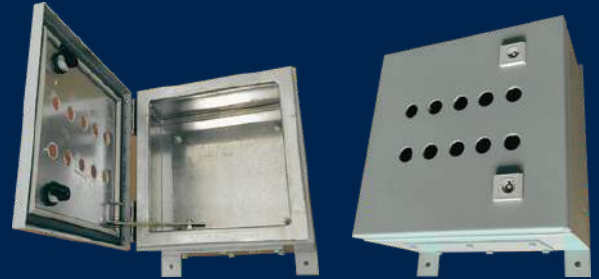


ECR Console for AHT Supply Vessel

EMC-EMI Enclosures



Sewage Treatment Plant Control Panel with EMC-EMI Enclosure for Survey Vessel Large Project



EMC-EMI Enclosure

Starter Panels



Starter for ACEL, Norway

Intelligent Motor Control Centre



Intelligent Motor Control Centre for Diamond Cement Plant in West Africa

Main Switch Boards



MSB for Anchor Handling Tug Supply Vessel

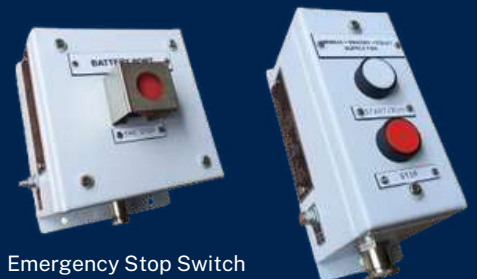


MSB (4000 A, 50kA) for the biggest barge for NPCC, Abu Dhabi.

Distribution Boards



Distribution Boards for ASKO Project, Unmanned Vessel, Norway



Emergency Stop Switch

Remote Start/Stop Push Button Station



for ASKO Project

Polycarbonate Junction Box with RJ45 Connector



VFD Panel (355kw)
for Philips Carbon Black



VFD Panel (700kw)



Auxiliary & Standalone VFD Panels (2.2kw to 200kw)
for ITC , Kovai

THIRD PARTY INSPECTION & SURVEY

- ✓ ABS (American Bureau of Shipping)
- ✓ CPRI (Central Power Research Institute)
- ✓ IRS (Indian Register of Shipping)
- ✓ CQAE (Chief Quality Assurance Establishment (Warship Equipment))
- ✓ BV (Bureau of Veritas)
- ✓ ERDA (Electrical Research And Development Association)
- ✓ LRS (Lloyds Register of Shipping)
- ✓ ERTL (Electronics Regional Test Laboratory, Trivandrum)
- ✓ DNV (Det Norske Veritas)
- ✓ SAMEER (Society for Applied Microwave Electronics Engineering & Research)
- ✓ DQAN Directorate of Quality Assurance (Indian Navy)

EXPEDITION WITH OUR PANEL



INS Vikrant, designed and built by CSL for Indian Navy



Largest barge designed & built by CSL for NPCC Abudabi



CIAI Vembanad Designed & Built by Samudra Shipyard



Floating Border Out Post Vessel Designed & Built by CSL for BSF



Electric Ferrie Designed & Built by CSL for Kochi Metro



Trailing Suction Hopper Dredger Designed & Built by CSL for DCI



SCI Pawan Anchor Handling Tug Supply Vessel Designed by STX OSC Norway



Inspection Barge for Indian Navy Built by Valeth Boats




AWARDS AND HONOURS





Award presented to Waves Electronics by Union Minister for MSME Bhanu Pratap Singh Varma & CSL for the significant contribution to building INS Vikrant

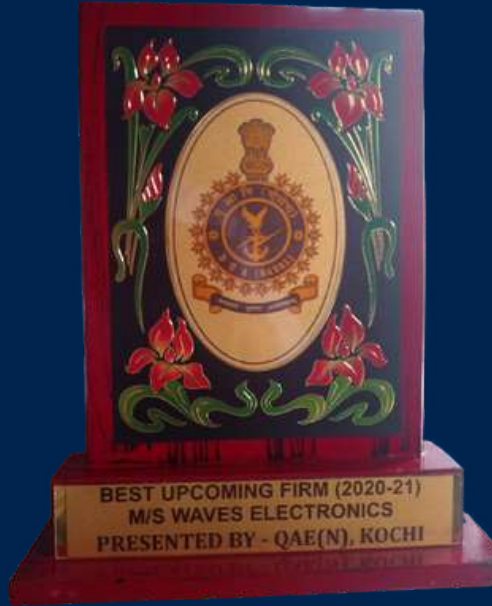


 **Waves Electronics Pvt.Ltd**
Kizhakkambalam-683562
Ernakulam, Kerala, India

 **+91 9895901052**
+91 9747000508

 **waves72@gmail.com**
 **www.waveselectronics.com**


AWARDS AND HONOURS





Award presented to Waves Electronics by Union Minister for MSME Bhanu Pratap Singh Varma & CSL for the significant contribution to building INS Vikrant



 **Waves Electronics Pvt.Ltd**
Kizhakkambalam-683562
Ernakulam, Kerala, India

 **+91 9895901052**
+91 9747000508

 **waves72@gmail.com**
 **www.waveselectronics.com**