



**WAVES**  
Quality power  
to the point

# WAVES NAVIGATION LIGHT CONTROL PANEL

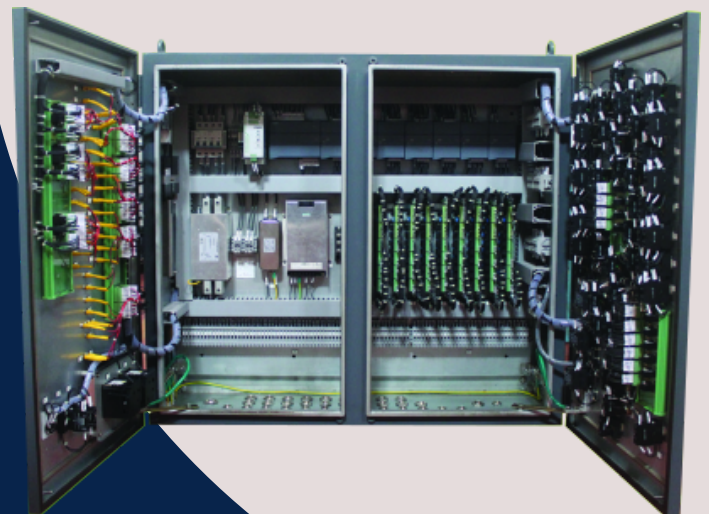


Waves Electronics Pvt. Ltd was founded in 1972 by Mr.C.P. Philipose and Mr.P.I Chacko. Today Waves is the market leader in the manufacture of Industrial Battery Chargers, Marine Control Systems, Navigation Light Control Panels, Generator Automation, and Automatic Power Factor Correction Control panels. We cater to the leaders in Indian industry and export to countries in Europe, South East Asia, the Middle East, and Africa. We produce high-quality performance tested and fully certified control systems that provide a stable operation over the complete life cycle.

# NAVIGATION LIGHT CONTROL PANELS

## FEATURES

- PLC / Relay based design
- Remote monitoring of navigation light via HMI
- Special function using Keyer units are available
- Minimum human intervention
- Low maintenance
- Auto changeover
- Current Monitoring System with CMC card





NLCP for India's first Indigenous Aircraft Carrier INS Vikrant

# CUSTOMER SPACE




Please specify your requirements

<b>TYPE OF NLCP</b>	<b>RELAY BASED</b> <input type="checkbox"/> <b>MICROPROCESSOR BASED NLCP</b> <input type="checkbox"/>
<b>NUMBER OF INPUT SOURCE</b>	
<b>INPUT SUPPLY(RATING OF VOLTAGE)</b>	<b>MAIN INPUT SUPPLY:</b> <b>EMERGENCY SUPPLY:</b>
<b>LAMP TYPE USED IN SHIP FOR NLCP</b>	<b>BULB TYPE</b> <input type="checkbox"/> <b>DOUBLE TIER :</b> <b>SINGLE TIER :</b>  <b>LED TYPE</b> <input type="checkbox"/> <b>DOUBLE TIER :</b> <b>SINGLE TIER :</b>
<b>RATING OF LAMP IN WATTS</b>	<b>DOUBLE TIER RATING :</b> <b>SINGLE TIER RATING :</b>
<b>NO OF LIGHTS FOR MAIN SUPPLY</b>	
<b>NO OF LAMPS FOR EMERGENCY SUPPLY</b>	
<b>DETAIL SPECIFICATION FROM YARD FOR NLCP</b>	
<b>THIRD PARTY CERTIFICATION OF NLCP</b>	
<b>MOUNTING TYPE OF NLCP</b>	<b>CONSOLE MOUNTING</b> <input type="checkbox"/> <b>BULK MOUNTING</b> <input type="checkbox"/>



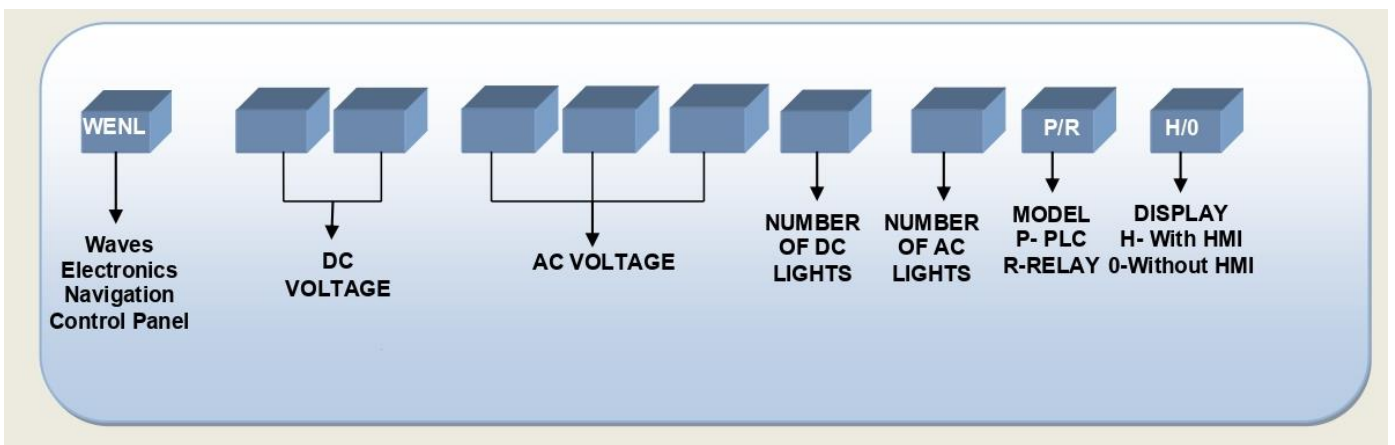
No	Product	Description	Approved by
1	 <p style="text-align: center;"><b>WENL242301427PH</b></p>	<ul style="list-style-type: none"> <li>■ PLC Based Navigation Light Control System(230V AC, 24V DC)           <ul style="list-style-type: none"> <li>● With 2 HMI display(12 inch)</li> <li>● Relay Boxes with battery bank(with battery backup of 12hrs)</li> <li>● 2 junction box</li> </ul> </li> <li>■ 41 lamps(27 AC lamps and 14 DC lamps)           <ul style="list-style-type: none"> <li>● Which include 14 double tier(14AC and 14DC lamps) and 13 single tier (AC) lamps</li> </ul> </li> <li>■ Bulk head mounted</li> </ul>	IRS
2	 <p style="text-align: center;"><b>WENL242301930PH</b></p>	<ul style="list-style-type: none"> <li>■ PLC Based Navigation Light Control System(230V AC,24V DC)           <ul style="list-style-type: none"> <li>● With 2 HMI display(15 inch)</li> <li>● Battery charger</li> <li>● Battery box(with battery backup of 12hrs)</li> <li>● Transformer</li> </ul> </li> <li>■ 49 Lamps(30 AC and 19 DC Lamps)           <ul style="list-style-type: none"> <li>● 19 double tier lamps(19AC and 19 DC) and 11 single tier lamps(AC)</li> </ul> </li> <li>■ Bulk head mounted</li> </ul>	QAEN(Kochi) and DGQA

No	Product	Description	Approved by
3	 <p style="text-align: center;"><b>WENL242301419PH</b></p>	<ul style="list-style-type: none"> <li>■ PLC Based Navigation Light Control Panel with 12 inch LCD</li> <li>■ 33 Lamps(19 AC and 14 DC Lamps)               <ul style="list-style-type: none"> <li>● 14 double tier(14 AC and 14 DC lamps) and 5 single tier lamps(AC)</li> </ul> </li> <li>■ Bulkhead mounted</li> </ul>	DGQA(Indian Navy)
4	 <p style="text-align: center;"><b>WENL242301416R0</b></p>	<ul style="list-style-type: none"> <li>■ Relay Based Navigation Light Control Panel(230V AC, 24V DC)</li> <li>■ 30 Lamps(16 AC and 14 DC Lamps)               <ul style="list-style-type: none"> <li>● 14 double tier lamps (14AC and 14DC) and 2 single tier lamps(AC)</li> </ul> </li> <li>■ Bulk head mounted</li> </ul>	DGQA(Indian Navy)
5	 <p style="text-align: center;"><b>WENL242301416R0</b></p>	<ul style="list-style-type: none"> <li>■ Relay Based Navigation Light Control Panel(230V AC,24V DC)</li> <li>■ 35 Lamps(19 AC and 16 DC Lamps)               <ul style="list-style-type: none"> <li>● 16 double tier lamps(16 AC and 16 DC) and 3 single tier(AC)</li> </ul> </li> <li>■ Bulk head mounted</li> </ul>	DGQA(Indian Navy)

No	Product	Description	Approved by
6	 <p style="text-align: center;"><b>WENL242301112P0</b></p>	<ul style="list-style-type: none"> <li>■ PLC Based Navigation Light Control Panel(230V AC,24V DC)             <ul style="list-style-type: none"> <li>● Solid State Relay with PLC Type</li> </ul> </li> <li>■ 23 Lamps(12 AC and 11 DC Lamps)             <ul style="list-style-type: none"> <li>● 11 double tier lamps(11AC and 11DC) and 1 single tier lamp(AC)</li> </ul> </li> <li>■ Console mounted</li> </ul>	ABS
7	 <p style="text-align: center;"><b>WENL242301010R0</b></p>	<ul style="list-style-type: none"> <li>■ Relay Based Navigation Light Control Panel(230V AC,24V DC)</li> <li>■ 20 Lamps(10 AC and 10 DC lamps)             <ul style="list-style-type: none"> <li>● 10 double tier lamps(10 AC and 10DC)</li> </ul> </li> <li>■ Console mounted</li> </ul>	IRS
8	 <p style="text-align: center;"><b>WENL242301010R0</b></p>	<ul style="list-style-type: none"> <li>■ Relay Based Navigation Light Control Panel(230V AC,24V DC)</li> <li>■ 20 Lamps(10 AC and 10DC Lamps)             <ul style="list-style-type: none"> <li>● 10 double tier lamps(10 AC and 10DC)</li> </ul> </li> <li>■ Console mounted</li> </ul>	IRS

No	Product	Description	Approved by
9	 <p><b>WENL242301818R0</b></p>	<ul style="list-style-type: none"> <li>■ Relay Based Navigation Light Control Panel(230V AC,24V DC)</li> <li>■ 36 Lamps(18 AC +18 DC Lamps)               <ul style="list-style-type: none"> <li>● 18 double tier(18 AC and 18 DC)</li> </ul> </li> <li>■ Console mounted</li> </ul>	IRS
10	 <p><b>WENL2410R0</b></p>	<ul style="list-style-type: none"> <li>■ Relay Based Navigation Light Control Panel(24V DC)</li> <li>■ 10 DC Lamps</li> <li>■ Console mounted</li> </ul>	IRS

**MODEL NAMING**





## Our Customers



Award presented to Waves Electronics by Union Minister for MSME Bhanu Pratap Singh Varma & CSL for the significant contribution to building INS Vikrant

## OUR PRODUCTS

- Battery Chargers
- Navigation Light Control Panel
- Main Switch Board
- Emergency Switch Boards
- Shore Connection Box
- Consoles
- EMI-EMC Enclosures
- Junction Box
- Distribution Board
- Starters/Motor Control Center
- Soft Starter Panels
- Variable Frequency Drive Panels
- Automatic Power Factor Correction Panel

and more ...

## REACH US

📍 Waves Electronics Pvt. Ltd  
 Kizhakkambalam-683562  
 Ernakulam, Kerala, India

☎ +91 9895901052  
 +91 9747000508  
 ✉ waves72@gmail.com  
 🌐 www.waveselectronics.com